

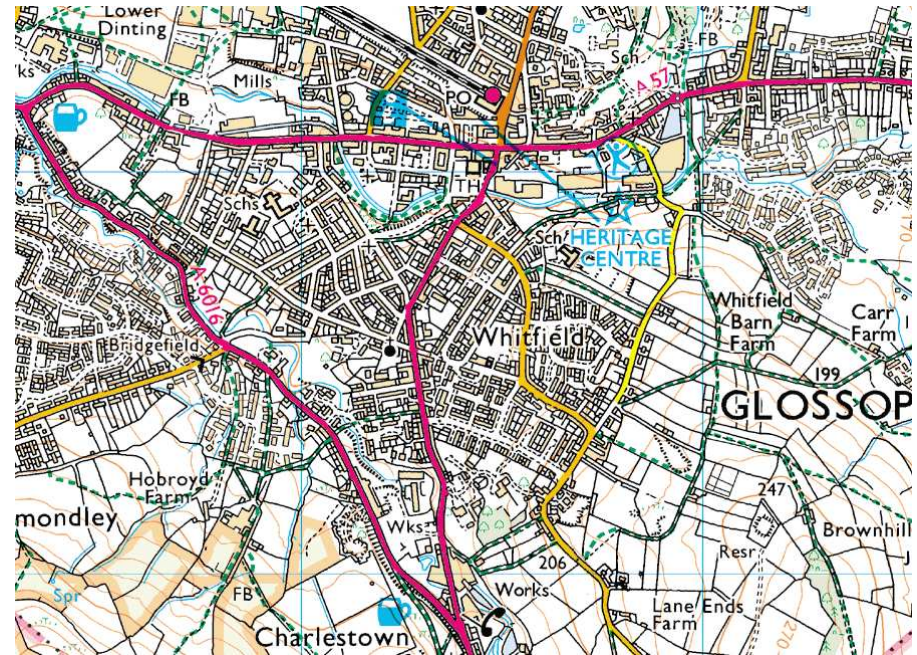
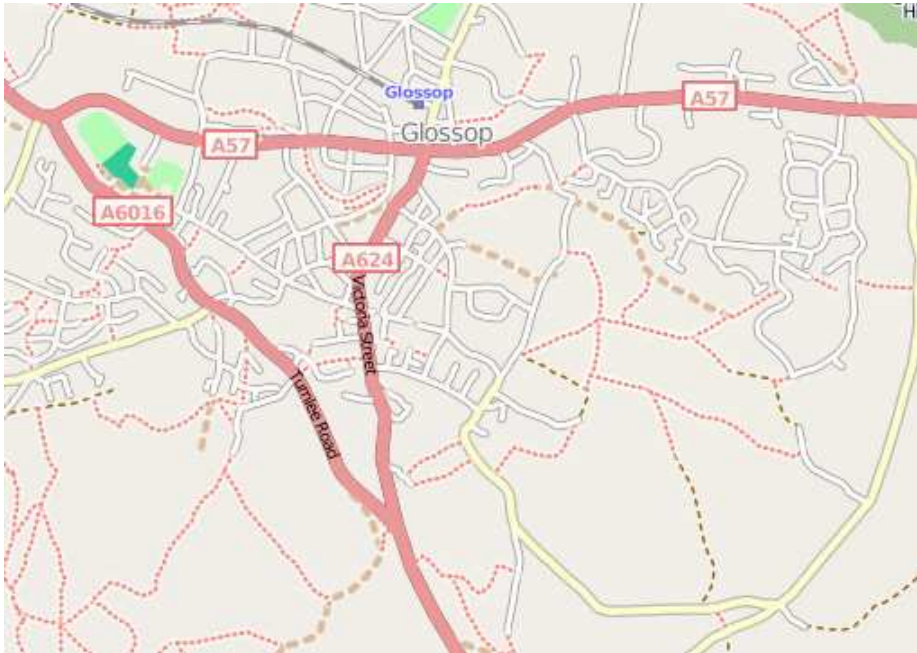
# Do (Paleo)Geographers Need User-Generated Mapping?

**Martin Dodge**

University of Manchester

‘Neogeographers meet Paleogeographers’ AAG Panel  
Tuesday 24th March 2009

# UGM is ‘a bit rubbish’



- UGM are impoverished maps. Why would (paleo) geographers use them, when we can get better for ‘free’?
- OSM has all the problems of wiki data, partial coverage, inconsistent quality, ‘randomness’ of tagging, etc
- ‘Doesn’t map South Bumfeck, Ohio’ (Steve), will it ever?

# Real value in the seeing the world through UGM eyes

- UGM projects, like OSM, offer some new potential to (paleo)geographers and academic map studies
- They expose the how knowledge production really happens
- Shifts our focus onto processes not products
- Revealing authorship, partiality of representations, temporality and contested ownership of maps
- These are rich areas for social science research - open up links to emerging themes across geography and STS, in terms of visual culture, embodied performance, memories and surveillance, temporal rhythms and mobilities, ...

# Window into knowledge production

The left screenshot shows the 'The talk October 2008 Archive by subject' page. The right screenshot shows the 'The talk October 2008 Archive by author' page.

**The talk October 2008 Archive by subject - Mozilla Firefox**

- [\[OSM-talk\] \[Tagging\] - RFC - Motorway linkimpliesoneway=??](#) Matthias Julius
- [\[OSM-talk\] \[Tagging\] - RFC - Motorway linkimpliesoneway=??](#) Stephen Hope
- [\[OSM-talk\] \[Tagging\] - RFC - Motorway linkimpliesoneway=??](#) Philip Homburg
- [\[OSM-talk\] \[tagging\] Feature Proposal - RFC - \(Wetland areas\)](#) Ulf Mehlig
- [\[OSM-talk\] \[tagging\] Feature Proposal - RFC - Proposed features/lakeshore](#) Roman Neu
- [\[OSM-talk\] \[tagging\] Feature Proposal - Voting - barrier](#) sergio sevellano
- [\[OSM-talk\] \[tagging\] Feature Proposal - Voting - maxspeed=none](#) Lauri Kytömaa
- [\[OSM-talk\] \[Tagging\] final RFC for barrier=](#) sergio sevellano
- [\[OSM-talk\] \[Tagging\] leisure=ice rink](#) Mathieu Clément
- [\[OSM-talk\] \[Tagging\] leisure=ice rink](#) Steven te Brinke
- [\[OSM-talk\] \[Tagging\] leisure=ice rink](#) Cartinus
- [\[OSM-talk\] \[Tagging\] leisure=ice rink](#) Steven te Brinke
- [\[OSM-talk\] \[Talk-us\] Tiger 2007 Data](#) Karl Newman
- [\[OSM-talk\] \[Talk-us\] Tiger 2007 Data](#) Dave Hansen
- [\[OSM-talk\] \[Talk-us\] Tiger 2007 Data](#) Karl Newman
- [\[OSM-talk\] \[Talk-us\] Tiger 2007 Data](#) Dave Hansen
- [\[OSM-talk\] \[Talk-us\] Tiger 2007 Data](#) Dave Hansen
- [\[OSM-talk\] \[Talk-us\] Tiger 2007 Data](#) Mikel Maron
- [\[OSM-talk\] \[Talk-us\] Tiger 2007 Data](#) SteveC
- [\[OSM-talk\] \[Talk-us\] TIGER 2007, first OSM data](#) Ian Dees
- [\[OSM-talk\] \[Talk-us\] TIGER 2007, first OSM data](#) Dave Hansen
- [\[OSM-talk\] Addresses / "Yellow pages" style informations](#) Chris Browet
- [\[OSM-talk\] Addresses / "Yellow pages" style informations](#) Frank Sautter
- [\[OSM-talk\] Administrators \(was More vandalism\)](#) Nic Roets
- [\[OSM-talk\] Administrators \(was More vandalism\)](#) Dutch
- [\[OSM-talk\] Administrators \(was More vandalism\)](#) Tom Hughes
- [\[OSM-talk\] Administrators \(was More vandalism\)](#) Frederik Ramm
- [\[OSM-talk\] Alternative proposal to the noname one and more](#) sylvain letuffe
- [\[OSM-talk\] amusing: caught mapping!](#) Andrew Harris
- [\[OSM-talk\] Another glitch with new Mapnik - edge of reservoir not shown](#) Jon Burgess
- [\[OSM-talk\] Another glitch with new Mapnik - edge of reservoir not shown](#) Simon Wood
- [\[OSM-talk\] APIs down?](#) Milenko
- [\[OSM-talk\] APIs down?](#) 80n

**The talk October 2008 Archive by author - Mozilla Firefox**

- [\[OSM-talk\] mapnik and openlayers?](#) Grant Slater
- [\[OSM-talk\] mapnik and openlayers?](#) Grant Slater
- [\[OSM-talk\] Diffs + osmxapi are no longer updated](#) Grant Slater
- [\[OSM-talk\] Recent changes to slippymap Mapnik rendering](#) Grant Slater
- [\[OSM-talk\] Code of conduct for automated \(mass-\) edits](#) Sebastian Spaeth
- [\[OSM-talk\] Code of conduct for automated \(mass-\) edits](#) Sebastian Spaeth
- [\[OSM-talk\] barrier=gate, run a script?](#) Sebastian Spaeth
- [\[OSM-talk\] map display www.openstreetmap.org](#) SteveC
- [\[OSM-talk\] Zoom level 12 on Potlatch](#) SteveC
- [\[OSM-talk\] map display www.openstreetmap.org](#) SteveC
- [\[OSM-talk\] map display www.openstreetmap.org](#) SteveC
- [\[OSM-talk\] \[OSM-legal-talk\] Contact Info For Tom Hughes Regarding Public Domain Ma](#)
- [\[OSM-talk\] Introducing CloudMade mapping ambassadors](#) SteveC
- [\[OSM-talk\] IEEE paper on OSM](#) SteveC
- [\[OSM-talk\] \[Talk-us\] Tiger 2007 Data](#) SteveC
- [\[OSM-talk\] SEO](#) SteveC
- [\[OSM-talk\] Ideas for student project on OSM](#) James Stewart
- [\[OSM-talk\] Ideas for student project on OSM](#) James Stewart
- [\[OSM-talk\] vandalism on OSM](#) Dave Stubbs
- [\[OSM-talk\] vandalism on OSM](#) Dave Stubbs
- [\[OSM-talk\] map display www.openstreetmap.org](#) Dave Stubbs
- [\[OSM-talk\] Voting process \(was: Re: Map Features, maxspeed and maplint\)](#) Dave Stubbs
- [\[OSM-talk\] map display www.openstreetmap.org](#) Dave Stubbs
- [\[OSM-talk\] Good practice for updating the source tag](#) Dave Stubbs
- [\[OSM-talk\] barrier=gate, run a script?](#) Dave Stubbs
- [\[OSM-talk\] barrier=gate, run a script?](#) Dave Stubbs
- [\[OSM-talk\] Contraflow bus lane](#) Dave Stubbs
- [\[OSM-talk\] brand=...](#) Dave Stubbs
- [\[OSM-talk\] brand=...](#) Dave Stubbs
- [\[OSM-talk\] \[OSM-dev\] I've added some new shop values in Map Features](#) Dave Stubbs
- [\[OSM-talk\] Xybot](#) Dave Stubbs
- [\[OSM-talk\] Xybot](#) Dave Stubbs
- [\[OSM-talk\] I've added some amenity values to "Map Features" based on tag usage](#) Dave

<http://lists.openstreetmap.org/pipermail/talk/2008-October/030148.html>

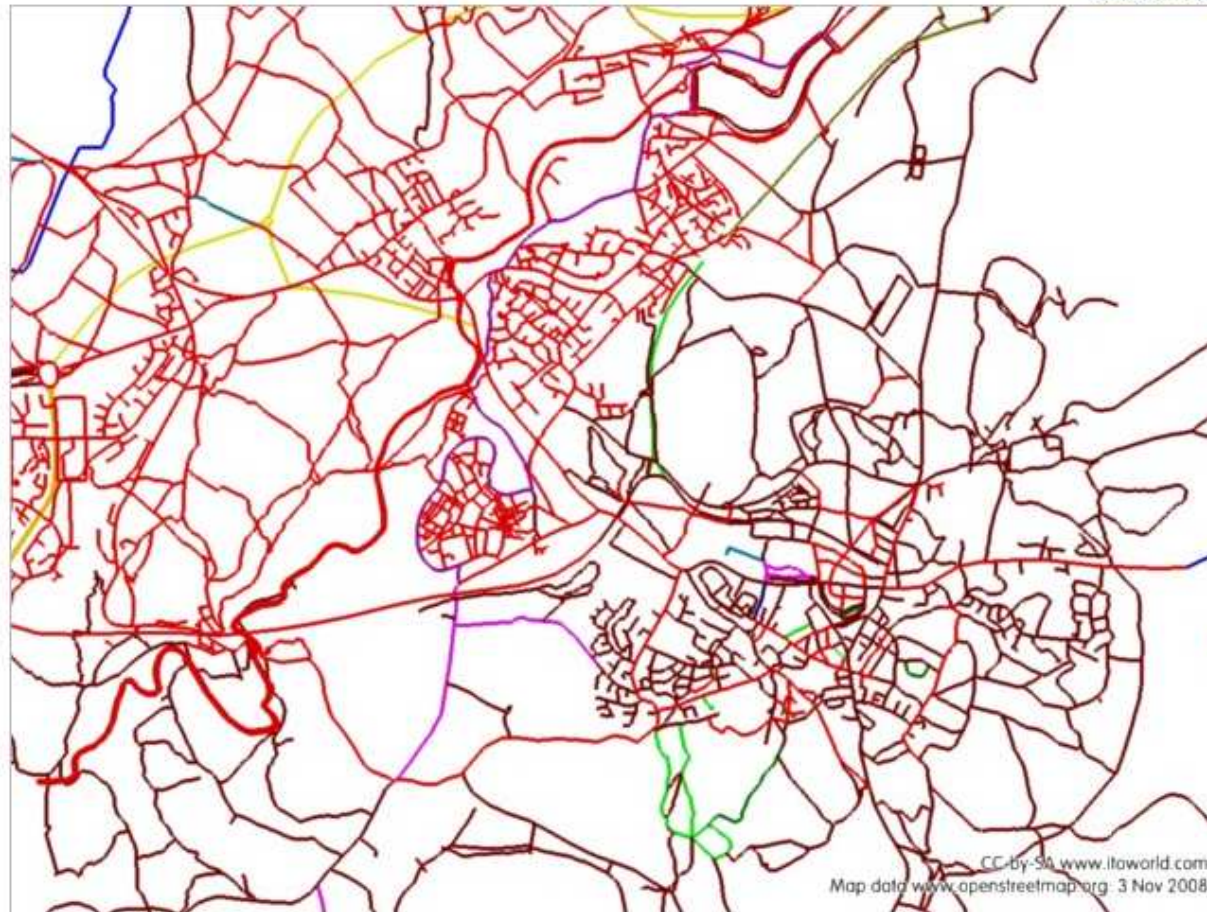
October 2008 - 954 messages



# Authorship of mapping: fractures anonymous authority?

map

Export image



Users

All

| Colour       | User            | Way | Node | Total |
|--------------|-----------------|-----|------|-------|
| Red          | RichardB        | 882 | 0    | 882   |
| Dark Red     | cyberbadger     | 528 | 0    | 528   |
| Purple       | Richard         | 21  | 0    | 21    |
| Light Purple | rvpilot         | 13  | 0    | 13    |
| Dark Green   | <no name>       | 10  | 0    | 10    |
| Light Green  | peter_james     | 7   | 0    | 7     |
| Olive        | FranBoon        | 7   | 0    | 7     |
| Yellow       | PeterIto        | 6   | 0    | 6     |
| Gold         | Simon Ward      | 4   | 0    | 4     |
| Orange       | ulfi            | 2   | 0    | 2     |
| Blue         | Warofdreams     | 2   | 0    | 2     |
| Dark Blue    | Matthew Newton  | 1   | 0    | 1     |
| Teal         | njd27           | 1   | 0    | 1     |
| Cyan         | davidearl       | 1   | 0    | 1     |
| Dark Teal    | deluded         | 1   | 0    | 1     |
| Dark Teal    | slaughteredlamb | 1   | 0    | 1     |
| Dark Teal    | Richard H       | 1   | 0    | 1     |
| Dark Teal    | xybot           | 1   | 0    | 1     |

Download CSV

Created with ITO!'s OSM Mapper service,  
[www.itoworld.com/static/osmmapper](http://www.itoworld.com/static/osmmapper)

Data

Manually select a different area

Display object list

Way 10275784

Details

History for Way 10275784

Details

• highway: footway

• created\_by: JOSM

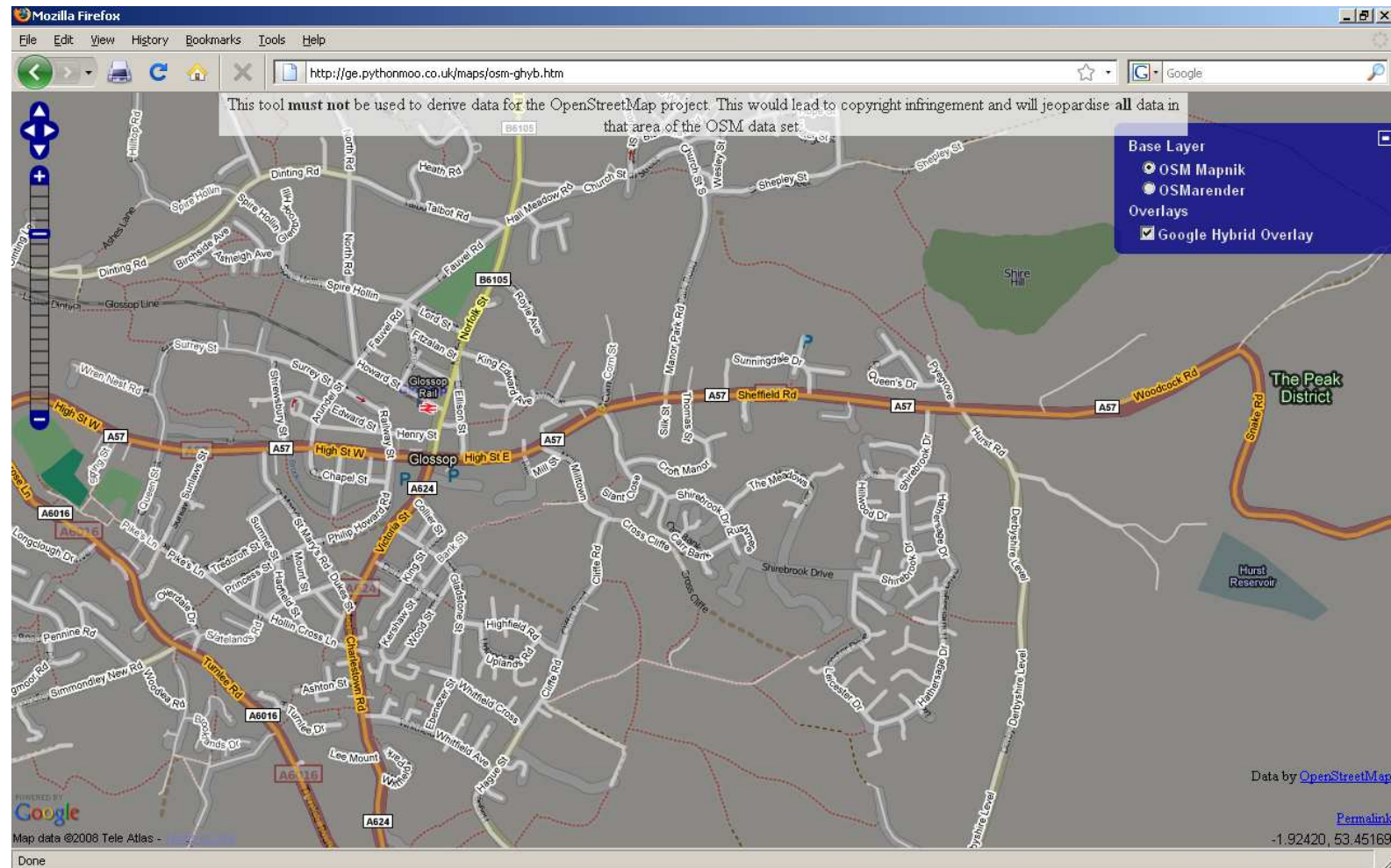
Edited by cyberbadger at 2007-12-12T13:47:56+00:00

Edited by cyberbadger at 2007-10-24T21:08:39+01:00

The map displays a street network with a red highlighted path. The path starts at the top left, goes south along James Street, then turns east onto Freetown. It continues east, passing Nags Head, and then turns south onto Whitfield Avenue. The path ends at the bottom of the map. Other streets shown include Ashton Street, Lee Mount, Whitfield Park, Whitfield Cross, and Hob Hill. A scale bar indicates 100 m and 200 ft. A legend in the top right corner shows the Base Layer (Mapnik, Osmarender, Cycle Map, NoName) and Overlays (Maplint, Data). A 'Permalink' link is visible at the bottom right.



# Partiality of representation explodes myth of map as ‘mirror’?



From a pedagogic point of view is great that OSM is ‘incomplete’

# How maps emerge explodes myth of temporal fixity?



Created with ITO!'s OSM Mapper service,  
[www.itoworld.com/static/osmmapper](http://www.itoworld.com/static/osmmapper)

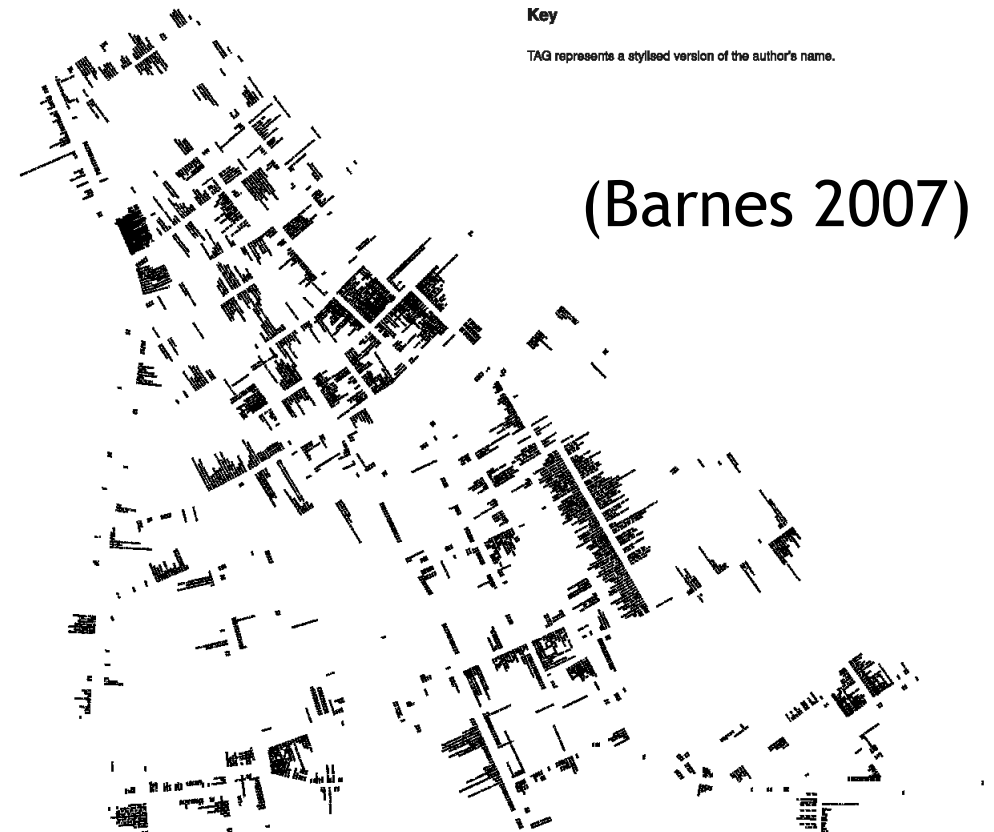


# Mapping differently, mapping difference



- human geography does not map any more
- creatively explore the opportunities of UGM to map new stories, emotions & feelings, patterns of power and change....

e.g. new insights from mapping the authorship of mapping



## Graffiti in New Basford

This map shows all readable instances of graffiti in the area. Graffiti is shown in the approximate position on the road in which it was found.

### Key

TAG represents a stylised version of the author's name.

(Barnes 2007)

[illegible]